

03-5-14-4  
w-5-a

~~W. A. B. 4.~~

## AGENDA COVER MEMO

**DATE:** May14, 2003

**TO:** Lane County Board of Commissioners

**DEPT:** Public Works

**PRESENTED BY:** Betty Mishou  
Engineering Administration

**AGENDA ITEM TITLE:** In the Matter of Authorizing the City of Oakridge to Assess Outside City Limits for Street Improvements to Second Street

### I. MOTION

**THAT THE BOARD ORDER BE APPROVED AUTHORIZING THE CITY OF OAKRIDGE TO ASSESS OUTSIDE CITY LIMITS FOR STREET IMPROVEMENTS TO SECOND STREET—A CITY OF OAKRIDGE COMMUNITY DEVELOPMENT IMPROVEMENT PROJECT**

### II. ISSUE OR PROBLEM

Should the City of Oakridge be authorized to assess outside the city for improvements to Second Street—a City of Oakridge Community Development improvement project?

### III. DISCUSSION

#### A. Background.

The City of Oakridge plans to improve Second Street during the summer of 2003. Per Board Order No. 02-8-13-3, up to \$400,000 was granted to the City of Oakridge for eligible project expenditures under the Lane County Community Development Road Improvement Assistance (CDRIA) program. Proposed for inclusion in the assessable project are eight properties that fall immediately outside city limits.

#### B. Analysis.

Per ORS 223.878, cities may assess outside city limits for local street improvements subject to certain conditions. The type of street improvement must be one that the city has authority to finance by assessment and the city must treat properties outside the city in the same manner as those within. Lane County, by resolution, must approve the assessments. Also, the owners of property outside the city subject to assessment must have the same rights and remedies that the owners of property within the city may have.

The CDRIA grant will be used to defray a portion of the full street reconstruction costs assessed to abutting property owners. Therefore, the City of Oakridge estimates assessments will be approximately \$30 per lineal foot for street reconstruction costs. Street improvements will involve excavation, paving, curb, gutter, and sidewalk construction. The CDRIA application submitted by the City of Oakridge discussed the possibility of forming a local improvement district to finance the improvements.

**C. Alternatives/Options.**

1. Authorize City of Oakridge to assess benefiting properties outside city limits for Second Street improvements.
2. Do not authorize City of Oakridge to assess outside city.
3. Add more CDRIA funding to cover assessment of County residents if available.

**D. Recommendation.**

It is hereby recommended that the City of Oakridge be authorized to assess outside city limits for Second Street improvements.

**IV. IMPLEMENTATION/FOLLOW-UP**

Upon approval and resolution by the Board, the City of Oakridge will include property outside city limits in the improvement project and assess accordingly.

**V. ATTACHMENTS**

1. CDRIA Application
2. Parcel Map

IN THE BOARD OF COMMISSIONERS OF LANE COUNTY  
STATE OF OREGON

RESOLUTION & ORDER NO.

(IN THE MATTER OF AUTHORIZING  
(THE CITY OF OAKRIDGE TO  
(ASSESS OUTSIDE CITY LIMITS FOR  
(STREET IMPROVEMENTS TO SECOND  
(STREET

**WHEREAS**, the City of Oakridge plans to fully improve Second Street during the summer of 2003; and

**WHEREAS**, per Board Order No. 02-8-13-3, up to \$400,000 was granted to the City of Oakridge for eligible project expenditures under the Lane County Community Development program; and

**WHEREAS**, proposed for inclusion in the assessable project are eight properties that fall immediately outside Oakridge city limits; and

**WHEREAS**, per ORS 223.878, cities may assess outside city limits for local street improvements subject to certain conditions. For assessment purposes, properties outside city limits must be treated in the same manner as those within and have the same rights and remedies; and

**WHEREAS**, the City of Oakridge estimates the improvement assessments will be approximately \$30 per lineal foot; and

**WHEREAS**, per ORS 223.878, Lane County, by resolution, must approve the assessments against benefiting properties that fall outside city limits; **NOW THEREFORE BE IT**

**ORDERED AND RESOLVED**, that the City of Oakridge is authorized to assess the benefiting properties described as Tax Lots 21-35-17-12-00200; 21-35-17-00-00100; 21-35-17-14-00900; 21-35-17-14-00800; 21-35-17-14-00700; 21-35-17-14-00600; 21-35-17-14-00500 and 21-35-17-14-00200 for Second Street improvements in accordance with ORS 223.878.

**DATED** this \_\_\_\_\_ day of \_\_\_\_\_, 2003.

\_\_\_\_\_  
Peter Sorenson, Chair  
Lane County Board of Commissioners

APPROVED AS TO FORM

Date 5-5-03 lane county

\_\_\_\_\_  
OFFICE OF LEGAL COUNSEL

Attachment 1

APPLICATION

LANE COUNTY COMMUNITY DEVELOPMENT  
ROAD IMPROVE ASSISTANCE FUND

A. PROJECT DESCRIPTION – Describe the total project and the benefits it will provide to the community. Attach additional sheets or information if necessary.

1. Who will benefit from the project? Be specific as possible.

The Second Street Project will benefit citizens of the City of Oakridge, Lane County, and the State of Oregon, in that general order. Since the project is designated as a "collector street" by ODOT and the Oakridge Transportation System Plan adopted in 2000, it stands to reason that dramatic improvement to the very substandard road will move local traffic much more efficiently. Next, since the road services the Oakridge High School and the LCC Oakridge Learning Center from the north, Lane County residents who attend the schools or use the athletic fields will have better access and circulation. Finally, by actually creating the circular link within Oakridge, local traffic will be directed off of Highway 58, making travel through town easier.

2. Will the facility be available for use by all County residents?

Yes. Not only are the facilities that are served by the roads open to all County residents, but also the rights-of-way are open to the public in perpetuity.

3. What other similar facilities are in the area of your proposed facility?

The Oakridge Elementary School is in the general proximity of the project.

4. Will there be a fee or charge to use the facility?

No.

5. What is the estimated cost of the total project?

\$1,105,820.00

The entire project includes waterline improvements, new service lines, stormwater improvements, and approximately 2500 linear feet of new street. The street will include curb and gutter, bicycle lanes, and sidewalks, as it is a designated collector.

6. What is the planned date of completion?

September of 2003

**B. ROAD IMPROVEMENT DESCRIPTION – Describe in detail the public road improvements to be constructed for which County funding is being requested. Attach plan diagrams.**

1. What is the estimated cost of the road improvements?

\$ 830,220.00

How was the estimate determined?

Standard engineering cost estimating figures were used, and a complete cost breakdown is attached.

2. What is the amount of County funds being requested?

\$ 400,000.00

3. In the event that County funds are not available, or not available in the full amount requested, how will the road needs of the project be addressed?

The City of Oakridge will match funds with current monies in the street fund set aside for these type projects, and will also seek other funding from ODOT programs for repair and improvement. In addition, the City is currently working to implement a stormwater fee to cover drainage improvement costs, and may also create an improvement district to cover project costs.

4. Provide information on your plans for construction of the road improvements.

The project will be constructed to the standards set forth in the Oakridge Transportation System Plan, and copies of the maps, diagrams, and written information is included.

5. If this project is within a city, has the city agreed to accept jurisdiction of the road improvements upon completion of the project?

Yes.

6. What are the plans to assure the roads will be maintained?

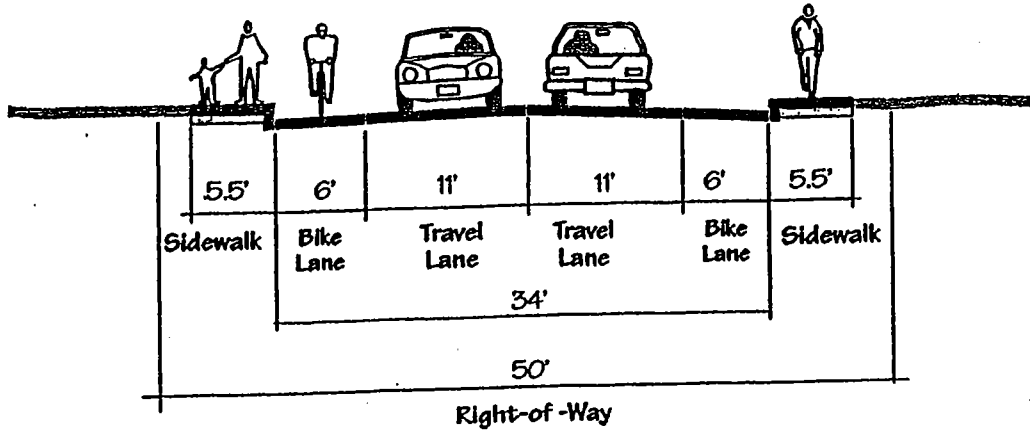
Normal maintenance performed by the City of Oakridge Public Works.

**C. Provide any additional information that you believe would be helpful in the evaluation of your proposal.**

This project has long been needed by the City, since it has a very high average daily count (282 to 344), and has numerous problems. The street was never constructed with proper base, and in continual need of repair, which makes it difficult for motorists. The lack of sidewalks and bicycle lanes makes it a serious hazard for other modes of transportation.

# Major Collectors

Minimum (with bike lanes and no parking)



## B. High-Priority Capital Improvements

The following projects are of the highest priority in Oakridge and are expected to be completed within the first five years of the TSP, or when funding becomes available. Implementation of these projects will be refined during the project design phase and will depend on identifying and securing funding. Projects are presented in random order. Project numbers correspond to the TSP project maps.

### B1. West Second/Rose Street

This project improves West Second Street to Major Collector standards, with curb, gutter, sidewalks, bikeways, and drainage reconstruction. Improvements will also involve a section of Rose Street between First and Second Streets, with realignment of the intersection at Rose and Second Street. Potential jurisdictional issues may need to be addressed adjacent the West Second right-of-way, with Oakridge School District property to the south and Lane County property to the north.

*Project Lead: City of Oakridge      Estimated Cost: \$862,500*

## West Second/Rose Streets Modernization Proposed Project Priorities (NOTE: Priority B1)

### Proposed Bicycle Projects

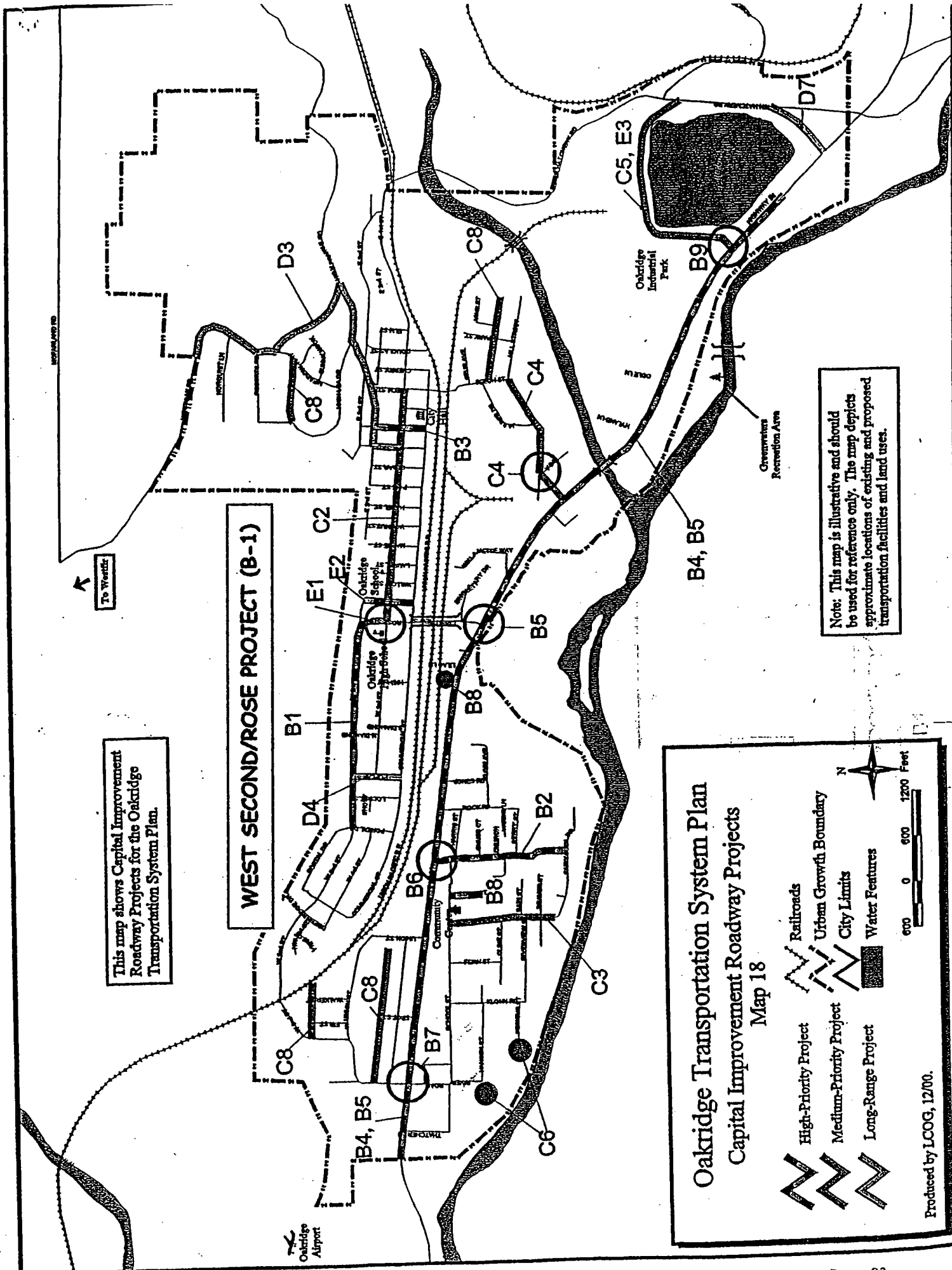
The bikeway improvement projects listed below will implement the proposed bikeway plan. The proposed bikeway plan includes on-street bike lanes for all arterials and major collectors. More detailed descriptions of these projects is provided in the next chapter.

Project No.	Project Title	Project Type
B1	West Second/Rose Street	High-Priority capital improvement
B2	Rainbow Street	High-Priority capital improvement
B5	Highway 58 Urban Standards	High-Priority capital improvement
C1	Commercial Street	Medium-Priority capital improvement
C2	East First Street	Medium-Priority capital improvement
C3	Garden Road	Medium-Priority capital improvement
C4	Hills Street	Medium-Priority capital improvement
C7	Salmon Creek Levee	Medium-Priority capital improvement
	Multi-use Paths	
D2	Fish Hatchery Road Bikeway	Long-Range capital improvement
D3	Oak Street/Westoak Road	Long-Range capital improvement
D5	Bikeways and Sidewalks for Arterial Streets	Long-Range capital improvement
D6	Bikeways and Sidewalks for Collector Streets	Long-Range capital improvement

### Proposed Pedestrian Projects

The pedestrian improvement projects listed below will implement the proposed pedestrian plan. The proposed pedestrian plan will establish a safe and efficient network of sidewalks on most City streets. More detailed descriptions of these projects is provided in Chapter Five.

Project No.	Project Title	Project Type
B1	West Second/Rose Street	High-Priority capital improvement
B2	Rainbow Street	High-Priority capital improvement
B3	Ash Street	High-Priority capital improvement
B5	Highway 58 Urban Standards	High-Priority capital improvement
C1	Commercial Street	Medium-Priority capital improvement
C3	Garden Road	Medium-Priority capital improvement
C7	Salmon Creek Levee	Medium-Priority capital improvement
	Multi-use Paths	
D1	Pedestrian Footbridge	Long-Range capital improvement
D3	Oak Street/Westoak Road	Long-Range capital improvement
D5	Bikeways and Sidewalks for Arterial Streets	Long-Range capital improvement
D6	Bikeways and Sidewalks for Collector Streets	Long-Range capital improvement



This map shows Capital Improvement Roadway Projects for the Oakridge Transportation System Plan.

**WEST SECOND/ROSE PROJECT (B-1)**

Note: This map is illustrative and should be used for reference only. The map depicts approximate locations of existing and proposed transportation facilities and land uses.

**Oakridge Transportation System Plan**  
**Capital Improvement Roadway Projects**  
 Map 18

- High-Priority Project
- Medium-Priority Project
- Long-Range Project
- Railroads
- Urban Growth Boundary
- City Limits
- Water Features

000 0 600 1200 Feet

Produced by LCOG, 12/00.



## Project Cost Estimate Worksheet

Description of Tasks	Units	Quantity	Unit Cost	Total
<b>◆ PRELIMINARY ENGINEERING</b> (Work by Agency Staff/Consultant)				
Planning and Concept Development	EA.	1	\$1,600	\$1,600
Project Schedule	EA.	1	\$520	\$520
Field Surveys	HR.	10	\$120	\$1,200
Vicinity Maps	HR.	24	\$65	\$1,560
Public Involvement	HR.	16	\$80	\$1,280
Bike/Ped & ADA considerations	HR.	4	\$65	\$260
Soils/Geotechnical Investigations	EA.	1	\$4,500	\$4,500
Hydraulic Study (storm sewer design)	EA.	1	\$3,000	\$3,000
Structure Design	NONE			
Pavement Design	HR.	24	\$65	\$1,560
Railroad Encroachment	NONE			
Utilities (possible relocation)	NONE			
Preliminary Design & Reviews	HR.	48	\$65	\$3,120
Final Design (Including PS&E)	HR.	36	\$65	\$2,320
Required Permits				
DSL/COE	NONE			
Conditional Use	NONE			
Comprehensive Plan Amendment	NONE			
Floodplain	NONE			
Other ⇨				
⇨ Contract Documents	EA.	1	\$1,200	\$1,200
⇨ Advertising	EA.	1	\$750	\$750
⇨ Bid Tabulation	HR.	5	\$80	\$400
⇨ Pre-Meetings	HR.	12	\$65	\$780

**Subtotal for Preliminary Engineering    \$24,050**

**Project Cost Estimate Worksheet**

	Units	Quantity	Unit Cost	Total
<b>◆ CONSTRUCTION COST ESTIMATE</b> (Show all major items of work) (Work by Agency Staff/Consultant)				
Mobilization	L.S.	ALL	\$30,000	\$30,000
Work zone traffic control	L.S.	ALL	\$19,000	\$19,000
<b>Roadway Work</b>				
Excavation or Embankment	C.Y.	8,800	\$10.00	\$88,000
Geotextile Fabric	S.Y.	Not Req.		Not Req.
<b>Drainage</b>				
Culverts	L.F.			None Req.
Storm Sewer	L.F.	3,910	\$30-\$38	\$129,600
Manholes	EA.	6	\$1,800	\$10,800
Inlets	EA.	16	\$900	\$14,400
Curb	L.F.	5,890	\$9.00	\$53,010
Sidewalks	S.Y.	2,020	\$30.00	\$60,580
Driveways	EA.	34	\$400	\$13,600
Bridges (piling, Br. rail, etc.)				None Req.
<b>Wearing Surfaces</b>				
Aggregate Base	C.Y.	5,200	\$16.00	\$81,690
AC Pavement	Ton	3,100	\$45.00	\$139,500
Concrete Pavement				None Req.
Guardrail				None Req.
Concrete Barrier				None Req.
Roadway Illumination				Existing
Traffic Signal Installation				None Req.
Landscaping	EA.	2	\$150	\$300
Other ⇨ Remove Trees	EA.	4	\$350	\$1,400
⇨ Parking Bumpers	L.F.	325	\$7.50	\$2,440
⇨ ADA Access Ramps	EA.	12	\$250.00	\$3,000
⇨ Heavy Service Aprons	EA.	4	\$2,500	\$10,000
Construction Engineering Authorization (10%)		1	\$65,700	\$65,700
Contingencies		1	\$72,300	\$72,300
<b>Subtotal for Construction</b>				<b>\$795,320</b>

**Project Cost Estimate Worksheet**

**WEST SECOND STREET MODERNIZATION**

	Units	Quantity	Unit Cost	Total
<b>CONSTRUCTION</b>				
Mobilization	L.S.	ALL	\$30,000	\$30,000
Traffic Control	L.S.	ALL	\$19,000	\$19,000

<b>ROADWAY WORK</b>				
Exc. & Emb	C.Y.	8,800	\$10.00	\$88,000
Geotextile Fabric	S.Y.			Not Req

<b>Drainage</b>				
Culverts	L.F.		Not. Req.	
10" Storm Drain (PVC 3034)	L.F.	1,990	\$30.00	\$59,700
12" Storm Drain	L.F.	1,020	\$35.00	\$35,700
15" Storm Drain	L.F.	900	\$38.00	\$34,200
Storm Manhole	EA.	6	1,800	\$10,800
Inlets	EA.	16	\$900	\$14,400
<b>Total Drainage</b>				<b>\$154,800</b>

Curb & Gutter	L.F.	5,890	\$9.00	\$53,010
Sidewalk (one side-6 ft.)	S.Y.	1,680	\$30.00	\$50,380
Sidewalk (both sides-5 ft.)	S.Y.	340	\$30.00	\$10,200
Parking Bumper	L.F.	325	\$7.50	\$2,440
ADA Access Ramp	EA.	12	\$250	\$3,000
Driveway Aprons	EA.	34	\$400	\$13,600
Driveway Aprons (Heavy)	EA.	4	\$2,500	\$10,000
Street Tree	EA.	2	\$150	\$300
Remove Tree	EA.	4	\$350	\$1,400
<b>Total C,G &amp; S</b>				<b>\$144,330</b>

<b>Wearing Surfaces</b>				
Agregate Base	C.Y.	5,200	\$16.00	\$81,690
4" A.C. Pavement	Ton	3,100	\$45.00	\$139,500
<b>Total Wearing Surface</b>				<b>\$221,190</b>
<b>Sub-Total Construction</b>				<b>\$657,320</b>
Engineering @ 10%				\$65,700
<b>Sub-Total + Engineering</b>				<b>\$723,020</b>
Contingency @ 10%				\$72,300
<b>Total Construction</b>				<b>\$795,320</b>

21 35 17 14  
OAKRIDGE

C.A.D. SYS.

CANCELLED  
1100  
3400  
3700  
4300  
4400  
4500  
4900

SEE MAP 21 35 16 23

SEE MAP 21 35 16 32

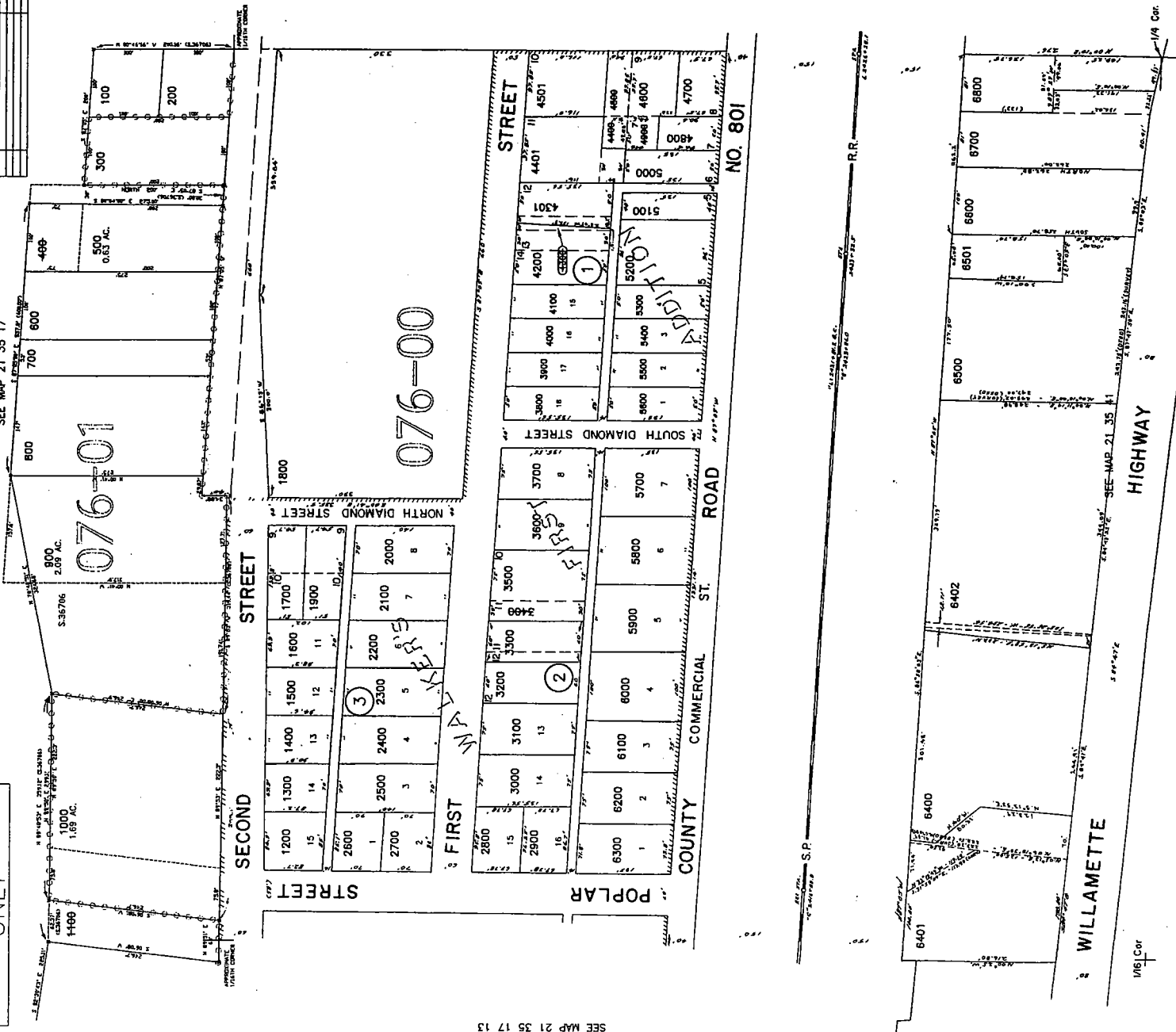
21 35 17 14  
OAKRIDGE

DATE	REVISION	BY	CHK'D BY

LANE COUNTY  
AND TAXATION  
ONLY

SCALE 1" = 100'

SEE MAP 21 35 17



SEE MAP 21 35 17 13

1/4 Cor

HIGHWAY

WILLAMETTE

S.P.

R.R.

NO. 801

076-01

076-00

STREET

STREET

STREET

STREET

STREET

COUNTY COMMERCIAL ST. ROAD

WILLAMETTE

HIGHWAY

1/4 Cor

SEE MAP 21 35 11